

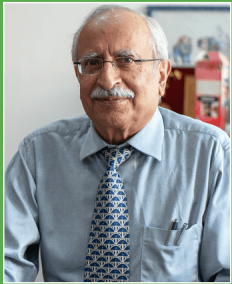


**MOBIUS
FOUNDATION**

Issue No. 5

2020

AUGUST DIARY



“Hope is a necessary quality, if one wants to effect change. This allows individual to approach the issue with a mindset and strategy suitable for success. It is not a wish, but the belief that you will reach your goal, no matter what. Hope is what we need to walk hand in hand with in this time of crisis and LET US ALL HOPE FOR A BETTER TOMMORROW.”

- Mr. Pradip Burman, Chairman, Mobius Foundation

Environment Positive: Viewpoint

This year’s World Population Day on 11th July was observed virtually focusing on the theme ‘investing in teenage girls’ who are hard hit by environment and population challenges exacerbated by covid-19. There have been many reports of rise in gender based violence, unintended pregnancies, economic hardships and school dropout due to the pandemic. Mobius Foundation in association with its partners celebrated the day by organizing a webinar which discussed these issues with focus on the linkages between population, environment and sustainability. Rising population has put unabated pressure on natural resources and rapid decline in environmental quality. According to a recent UN report human population is driving around a million species to extinction leading to the so called sixth mass extinction. Biologist EO Wilson gives a scary estimate of three species being driven to extinction every hour. UN’s Intergovernmental Panel on Climate Change (IPCC) reports that population growth and economic growth (consumption) are the two main causes of global warming.

Rising population is also hindering world’s progress towards achievement of the Sustainable Development Goals (SDGs). Population and related issues of health care, education and women empowerment undermine the achievement of most of the goals. Many demographers and environmentalist believe that by adopting a new goal on population, the world could accelerate the progress on SDGs. Covid pandemic has brought in focus new challenges on both population and development scenario. With migration and urbanization taking place on an unprecedented scale, there is need to analyse demographic trends to address people’s current and future needs. Simultaneously, we need to build resilience, immunity and sustainability to cope with the vulnerability of the population to pandemics as well as climate change and other environmental stresses.

Dr Ram Boojh
CEO, Mobius Foundation

Highlight of the Month

Delhi’s sero-prevalence study finds 23.48 per cent people affected by COVID - 19

The study, which was conducted from June 27 to July 10 by the National Centre for Disease Control (NCDC) in collaboration with the Delhi government has found that 23.48 per cent of the people have been affected by Covid – 19 in the city and also indicated that a large number of infected persons remain asymptomatic.

A total of 21,387 samples were collected as per lab standards and were tested. The tests help in identification of presence of antibodies in the general population.

It is one of the largest sero-prevalence studies conducted in the country using the ELISA testing.

Source: <https://timesofindia.indiatimes.com/city/delhi/delhis-sero-prevalence-study-finds-23-48-per-cent-people-affected-by-covid-19/articleshow/77085162.cms>

Fertility rate: ‘Jaw-dropping’ global crash in children being born

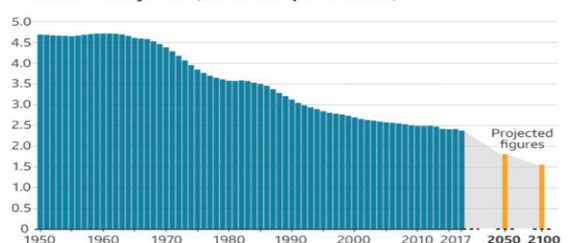
The world is ill-prepared for the global crash in children being born which is set to have a “jaw-dropping” impact on societies, say researchers. The fertility rate - the average number of children a woman gives birth to - is falling. If the number falls below approximately 2.1, then the size of the population starts to fall. Fertility rates are falling as it is being driven by more women in education and work, as well as greater access to contraception, leading to women choosing to have fewer children.

Why is 2.1 the fertility rate threshold? - The number should be 2.0 - two parents have two children, so the population stays the same size. But even with the best healthcare, not all children survive to adulthood. Also, babies are ever so slightly more likely to be male. It means the replacement figure is 2.1 in developed countries.

What do the experts say? - If these predictions are even half accurate, migration will become a necessity for all nations and not an option. The distribution of working-age populations will be crucial to whether humanity prospers or withers.

Women are having fewer children

Global fertility rate (livebirths per woman)



Source: Institute for Health Metrics and Evaluation at the University of Washington

Source: <https://www.bbc.com/news/health-53409521>

ICSE FORUM 2

World Population Day 2020

Keeping in view the theme of the World Population Day 2020, and in line with the vision of Mobius Foundation on population stabilization and sustainable living, the ICSE-2 Forum.

Webinar titled “POPULATION AND SUSTAINABILITY IN COVID ERA” was organised on Saturday July 11th, 2020 between 11:00 AM to 12:30 PM (IST) by Mobius Foundation in partnership with CEE (Centre for Environment Education) and The Climate Reality Project India.

The overall objective of the webinar was to enhance awareness of population issues, including their relations to the environment and development in the context of COVID-19.

The webinar was attended by 245 participants. The online broadcast was further viewed by 2000+ viewers from all across the globe through Facebook/@themobiusfoundation.



ICSE
International Conference on Sustainability Education
FORUM 2
World Population Day 2020 Webinar
"POPULATION AND SUSTAINABILITY IN COVID ERA"
11th July 2020, 11:00 AM - 12:30 PM (IST)
Register at: www.icse2019.org
Platform: Zoom (Login details will be shared on registered email id of participants)

SPEAKERS

- Dr. Ram Boohi
CEO, Mobius Foundation
- Mr. Kartikeya V Sarabhai
Founder and Director,
Centre for Environment Education(CEE)
- Ms. Poonam Mutreja
Executive Director,
Population Foundation of India
- Prof. R. B. Bhagat
Professor and Head, Department of Migration and
Urban Studies, International Institute
for Population Sciences
- Ms. Shalija Chandra
Former Secretary,
Ministry of Health and Family Welfare, Govt. of India

MOBIUS FOUNDATION | An Initiative by Mobius Foundation | CEE | The Climate Reality Project INDIA

Food for Thought

Climate expert calls for nature-based solutions

Adopting ecosystem-based approaches (involving conservation, sustainable management and restoration) can help communities in coastal cities like Kochi to reduce vulnerabilities. There is a huge research community that favours nature-based solutions, especially in coastal protection, rather than ones based on engineering. Previously coastlines like Kochi could have been protected by natural barriers like mangroves. “Putting in mangroves, trees, restoring beaches that were eroded; these solutions are cheaper than huge sea walls and can do the same degree of flood protection.

Much of Kochi lies below the sea-level and some parts are subsiding because of groundwater action. What you see here is a curious dynamic of sea level slowly rising and the city slowly sinking and there are not enough natural barriers on the coastline. Many of the larger cities, tier-1 alpha cities are coastal. There is an assumption that many of the infrastructure and assets are concentrated on coastal cities.

Source: <https://timesofindia.indiatimes.com/city/kochi/climate-expert-calls-for-nature-based-solutions/articleshow/70165058.cms>

Third Pole – Need for Cooperative, Constructive Engagement

The Tibetan plateau, (Hindu Kush Himalaya-HKH ice sheet), is known as the world’s “Third Pole.” The plateau with more than 46,000 glaciers (holds the largest number of glaciers and snow after the Arctic and Antarctic) is the origin of Asia’s major river systems — the Indus, Sutlej, Brahmaputra, Irrawaddy, Salween, Mekong, Yangtze, and Yellow Rivers which is lifeline of around 2 billion population in surrounding countries.

But climate change and unchecked development is assessed to lead to loss of one-third of the regions glaciers by 2100, even if global warming is held at 1.5 degrees Celsius (ICIMOD January 5, 2019 HKH assessment report). This would severely impact the water, energy, and food security of the surrounding countries. The increased temperatures will see an increase in melt waters, which in short term will lead to increasing lake volumes causing floods, landslides, and mudslides. In long term, depleted glacial melt will lead to water scarcity and droughts. It is this looming water insecurity which is manifesting in wars and over exploitation by riparian states. Such a narrow self-serving approach will only aggravate the conflicts and magnify the distress on HKH ecosystem. The need of the hour is to declare the Tibetan Plateau as a Global Biosphere with all riparian states working on a regionally integrated approach to preserve the ecosystem and develop a mutually beneficial, sustainable water management system. Wars aren’t the solution but constructive engagement, mutual trust and cooperation for common good is the key. The quicker the realisation sets, the better it will be for the entire region!!

Col Santhosh Kumar (Retd) - Head Projects, Mobius Foundation

Source: <https://www.indiatimes.com/trending/environment/madurai-tea-stall-edible-cups-518427.html>

Positive Affirmations

Tamil Nadu: This tea Kiosk in Madurai sells tea in edible cups

Sustainability is the need of the hour. Disposing of and upcycling existing plastic in an efficient manner are just two ways to achieve that. One such example is of this group of people running a tea kiosk on Mudurai’s West Masi Street.



This tea kiosk serves tea in edible cups. Customers drink their tea in chocolate-flavoured biscuit cups and then munch on it after they are done! So you get chai and biscuit together. Ingenious! This is RS Pathy Nilgiri tea kiosk that opened just a month ago in the city.

Reportedly, each cup can hold 60 ml of hot tea for 10 minutes and eating the cup is like eating two to three biscuits. The cups, kind of, act as wafer cones that ice

Source: <https://www.indiatimes.com/trending/environment/madurai-tea-stall-edible-cups-518427.html>

Funny Side



Mobius Foundation

4th Floor, Sagar Plaza, Distt Centre, Laxmi Nagar, Vikas Marg, Delhi-110092
P: 011-49854523, 011-49433823 | E: info@mobiusfoundation.in | www.mobiusfoundation.in